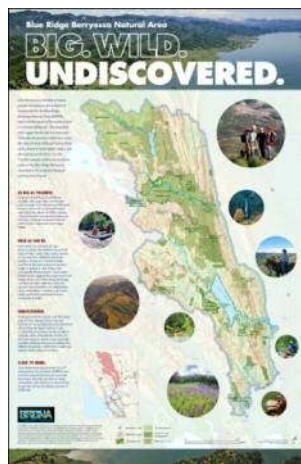




A Few of the Things We Can Do for You

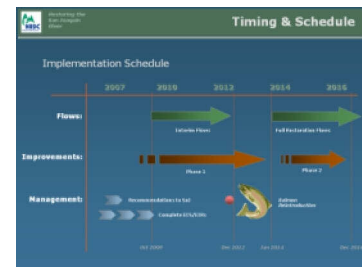
Design showcase maps

We make maps that get noticed and clearly show essential information – for reports, press conferences, public events, member and donor outreach, board support and more.



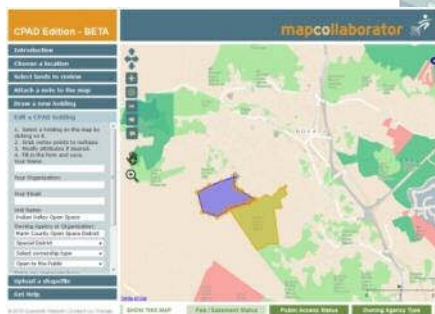
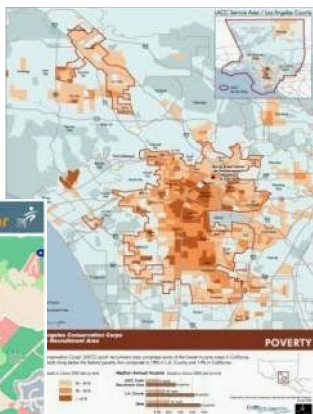
Create great presentations

Having a great map is only part of the story – we prepare brochures, PowerPoint presentations, interactive applications and other materials to help you communicate effectively



Create, analyze spatial data

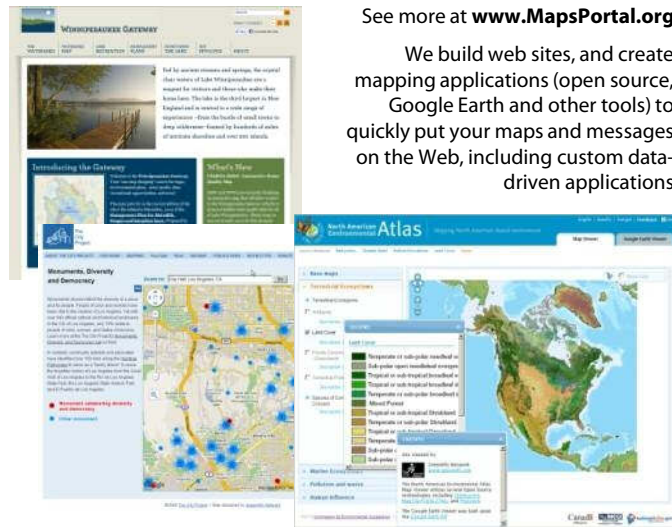
We can create GIS data (including in the field), and we can conduct a wide range of spatial analysis on almost any kind of information – including landscapes, demographics, imagery, databases and more.



Build your web presence

See more at www.MapsPortal.org

We build web sites, and create mapping applications (open source, Google Earth and other tools) to quickly put your maps and messages on the Web, including custom data-driven applications



Develop database applications

We build custom web and other applications to manage projects, facilities, or other data, with well-designed interfaces and reports



Support all levels of planning

We can produce just about any kind of map or graphic you can imagine and we know how to connect that work to support your planning process.

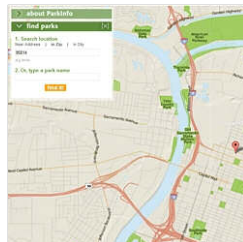




About GreenInfo Network

Information and Mapping in the Public Interest

The mission of GreenInfo Network is to bring the power of information and mapping technologies to non-profits, governmental agencies and other public interest organizations, enabling them to more effectively understand and communicate the relationships between issues, people and places.



GreenInfo Network was founded in 1996 to support public interest groups seeking to use computer mapping and related technology. It is a non-profit, tax-exempt organization, and works throughout the United States.

CLIENTS: GreenInfo Network works exclusively with public interest groups, including non-profits and governmental agencies. The following are just some of our over 500 current and past clients:

Bay Area Open Space Council
California Dept. of Parks & Recreation
California Invasive Plants Council
California Coastal Conservancy
Commission for Environmental Cooperation
Environmental Defense Fund
Greenbelt Alliance

Houston Wilderness
Land Trust of Napa County
Ocean Conservancy
Resources Legacy Fund
Southern Foodways Alliance
The William & Flora Hewlett Foundation
USGS Gap Analysis Program

SERVICES: GreenInfo Network has a wide range of capacities for creating, analyzing and communicating geographic information, including:

- Conservation planning for land acquisition
- General environmental analysis and mapping
- Demographic analysis and mapping
- GIS needs assessments, set-up and training
- Web mapping/applications, incld. Google Earth
- Collaborative web tools (MapCollaborator)
- Strategic communications planning
- Member/supporter targeting and analysis
- Database application development
- Map and cartographic design
- Digitizing and acquisition of GIS data
- Graphic design and production
- Geographic model building and analysis

TECHNOLOGY: GreenInfo Network geospatial technology is built on Esri ArcGIS and related products. Web mapping and other interactive products are primarily authored in open source software. GreenInfo Network prints high quality output on large format plotters and high speed laser printers. GIS data sets are maintained on a wide range of subjects, from natural resource factors to demographics, and are supplemented with client-specific information as needed.

STAFF:

Larry Orman, Executive Director
Amanda Recinos, Associate Director
Greg Allensworth, Sr. Web Developer
Alexandra Barnish, Sr. GIS Specialist
Stephanie Ding, GIS Specialist
Megan Dreger, GIS Specialist
Robert Graham, Web Developer

John Kelly, Sr. GIS Specialist/Web Developer
Maegan Leslie Torres, Sr. GIS Specialist
Jennifer Strahan, Interactive Team Mgr.
Bobby Sudekum, GIS Specialist
Tim Sinnott, Sr. GIS Specialist
Louis Jaffe, Multi-Media Consultant
Aubrey Dugger, GIS Consultant