

Make sure your email program loads images or [click to view this email in a web browser](#)



## MapLines

August 2009

*A Quick Roundup of GIS, Maps and More from GreenInfo Network*

Dear Friend,

Welcome to our second issue of MapLines, our monthly e-newsletter of tips, tricks and tools.

We'd love to keep you on the **MapLines** list – but if you would like to unsubscribe, no problem, just click the link at the bottom of this message, and thanks for reading. We also respect your privacy and won't sell or trade your email address.

On to the news!

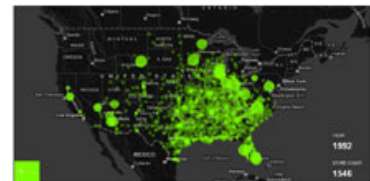
### New Report

The next generation of protected land inventories for the entire United States - that's the subject of a brand new report, *A Map for the Future*, created by GreenInfo Network for the PAD-US Partnership (Protected Areas Database of the United States..), released late last month. Download the report and find out more about this exciting project at [www.ProtectedLands.net](http://www.ProtectedLands.net) (and about GreenInfo's detailed inventory of California protected lands at [www.CALands.org](http://www.CALands.org)).



### Incredible Data Visualizations

[FlowingData](http://flowingdata.com) has a wide range of great visualizations, often with instructions or links to original data (check the one of growth of Walmart stores <http://projects.flowingdata.com/walmart/> -- and you can find one for Target stores' growth).



### Online maps with your look and feel

Ever wish you could take one of the commercial mapping applications and change the color scheme? Hide features or labels you don't need? Try the [Cloudmade style editor](#)! Now you can create a personalized map style based on OpenStreetMap data. Once you've created a style, embed the map into your website with Cloudmade's [Web Maps Lite API](#). It's also possible to load a Cloudmade map into a Flash application. Here's a [flash sample](#) GreenInfo created in just minutes.



### Maegan Leslie-Torres is back

I'm back from Brazil! After an amazing two years of exploring the beautiful country of Brazil and living it's unique capital of Brasilia, I am back to map making at GreenInfo. I am very excited to get back into GIS and to return to the GreenInfo team.



### GIS Conferences

GreenInfo Network recently attended the [ESRI User Conference](#) and the [Society for Conservation GIS Annual Conference](#). Check out the links for conference summaries.

### Plotter For Sale

Need a plotter that can print great 36" wide maps and graphics? GreenInfo has an HP 1055CM (postscript) plotter with lots of ink cartridges that we're selling, as we've acquired a new plotter. It's in good shape with a minor control panel quirk, \$1,750, picked up at our San Francisco office - send inquiries to [gin@greeninfo.org](mailto:gin@greeninfo.org) Subject: HP Plotter.

Happy mapping!

The GreenInfo Team

*Larry Orman, Amanda Recinos, Tim Sinnott, Maegan Leslie-Torres, Jennifer Strahan, Rhonda Friberg, Alex Barnish, John Kelly, Jason Jones, Stephanie Ding, Mike McGunagle and Aubrey Dugger*

Got great tips for us to put in our newsletter? Send 'em to [gin@greeninfo.org](mailto:gin@greeninfo.org)!

Check out these other GreenInfo Network managed web sites: [www.parkininfo.org](http://www.parkininfo.org), [www.landtrustgis.org](http://www.landtrustgis.org), [www.calands.org](http://www.calands.org), [www.protectedlands.net](http://www.protectedlands.net)

[GreenInfo Network](#) | 564 Market Street, Ste. 510, San Francisco, CA 94104 | 415-979-0343  
| [gin@greeninfo.org](mailto:gin@greeninfo.org)

